

DIGITAL POCKET MANOMETER



Pressure	Velocity	Temperature
± 0.4 to 5000 Pa ± 0 to 20.0 inH ₂ O	1.00 to 90.0 m/sec 197 to 17700 ft/min	0 to 500.0°C 0 to 932°F

Pressure:



Velocity with dpm - i Pitot Tube:



Temperature with K-type Probe:



Features:

- Auto Zeroing
- Select Velocity Resolutions
- Monitoring and Downloading Software
- White LED Backlit Display
- 9 Different Locations
- Store up to 4000 Readings
- Analogue Output



Digital Pocket Manometer allows the engineer to select velocity resolution.

With a multi-function white LED backlit display, the auto-ranging, auto-zeroing manometer is able to give true pressure, velocity and live volume readings with optional temperature measurement using K-type probes.

A maximum of 4000 readings can be stored in the manometer at any one time; up to 9 different locations are available. Readings can be downloaded using DpmUsb Software, which can also be used for continuous monitoring, utilising the PC to set parameters.

Weighing 360 g, measuring 145 x 85 x 50 mm and powered by 2 AA sized batteries; the Digital Pocket Manometer is ideal for the modern engineer.

Standard Accessories:

- 2 x 6 mm Tubing Adaptor (1)
- 3 m x 2 mm Bore Flexible Tubing (2)
- Calibration Certificate
- Instruction Manual
- Rubber Holster
- Soft Lined Case

Optional Extras:

- Analogue Output
- DpmUsb Software
- Pitot Static Tubes
- Temperature Probes
- Test Set Case

		Pressure	Velocity		Temperature
Models:		Range / Resolution:			
ST650 M	ST650 I	Pressure:			
●		Pa	± 0.4 to 999.9	± 1000 to 5000	
●		KPa	± 0.4 to 99.9 Pa	± 100 to 999 Pa	± 1.00 to 5.00 KPa
●		mbar	± 0.000 to 0.999	± 1.00 to 9.99	± 10.0 to 50.0
●		mmH ₂ O	± 0.000 to 0.999	± 1.00 to 9.99	± 10.0 to 99.9 ± 100 to 510
	●	inH ₂ O	± 0.000 to 0.999	± 1.00 to 9.99	± 10.0 to 20.0
●		mmHg	± 0.000 to 0.999	± 10.00 to 37.51	
	●	inHg	± 0.000 to 0.999	± 1.00 to 1.47	
	●	PSI	± 0.000 to 0.726		
		Velocity :		dpm - i	Ellipsoidal
●		m/sec	1.00 to 30.0	2.00 to 90.0	
	●	ft/min	197 to 5905	394 to 17700	
		Temperature (with K – type probe):			
●	●	°C	± 0.0 to 500.0		
●	●	°F	± 0 to 932		

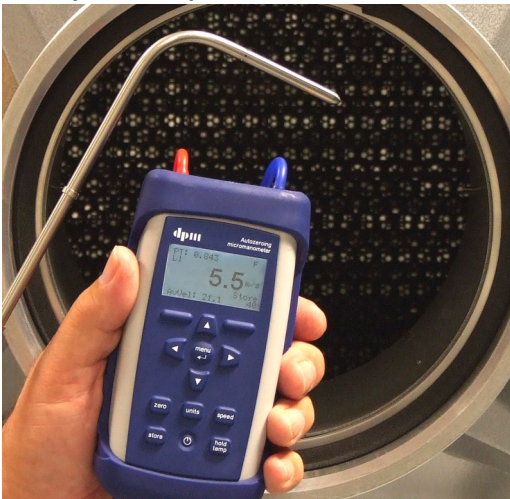
Accuracy:

Pressure at 20°C,
Velocity with Ellipsoidal type at 16°C, 1000 mbar:
 Readings < 100 counts ± 2 counts.
 Readings > 100 counts ± 1% of reading ± 1 count

Velocity with dpm-i type at 16°C, 1000 mbar:
 ± 3% of reading or ± 0.05 m/sec (10 ft/min)
 ± 1 count whichever is greater.

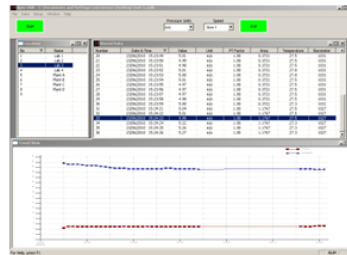
Temperature at 20°C:
 ± 2°C (36°F)

Velocity with Ellipsoidal Pitot Tube:



DpmUsb Software:

Downloading data:



Monitoring:



DpmUsb Software can be used for downloading data and / or for monitoring.

DpmUsb Software allows the engineer to select the Auto Zero time, the Auto Store time and the default temperature and barometer settings; 10 Pitot Tube Factors and 10 K Factors can be stored on the PC.

Data can be viewed and printed in report and / or graph form; it can also be arranged in a database with the engineer choosing the visible fields, location names and how the data is organised.

The on-screen multi-view display offers a choice of digital monitors and gauges with the maximum and minimum values of all gauges being user set.



In the interest of continuous product development and improvement DP Measurement reserve the right to amend specifications and discontinue models, features and colours of the ST6 Series at any time without prior notice.

Manufactured in UK

Distributed by:



DP Measurement
 Unit 11, Top Angel, Buckingham Industrial Park
 Buckingham, England. MK18 1TH
 Tel / Fax +44 (0)1280 817122
www.ttseries.com email dpm@ttseries.com



Associated Instrument Repairs
 Unit 11, Top Angel, Buckingham Industrial Park
 Buckingham, England. MK18 1TH
 Tel / Fax +44 (0)1280 823823
www.a-i-r.co.uk email air@ttseries.com